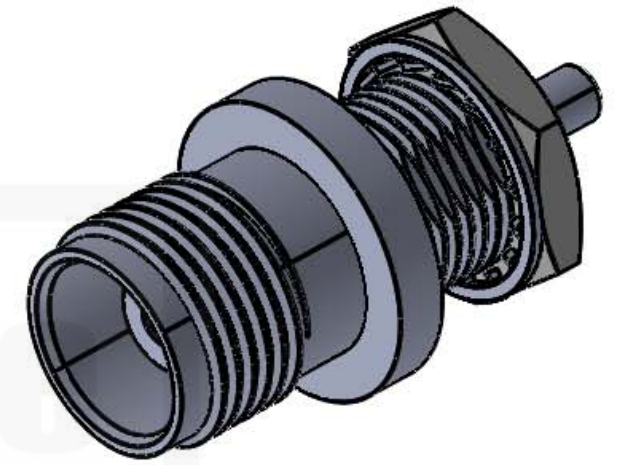
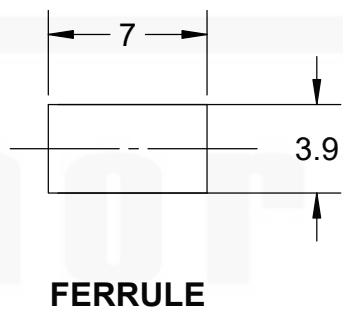
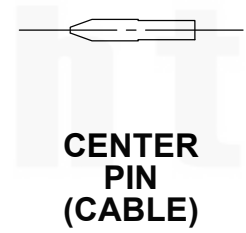
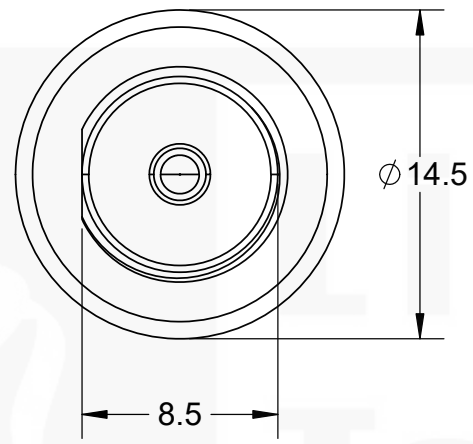
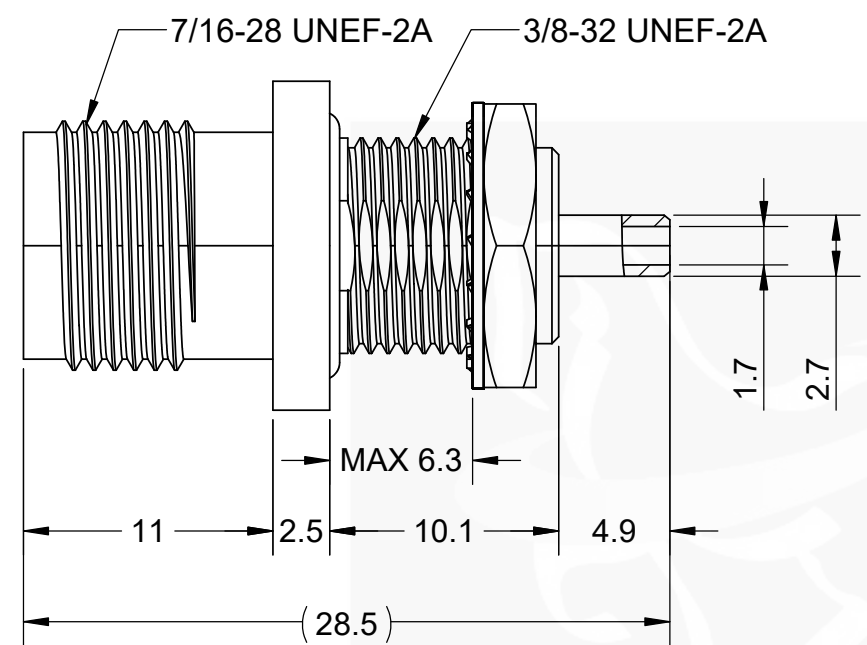
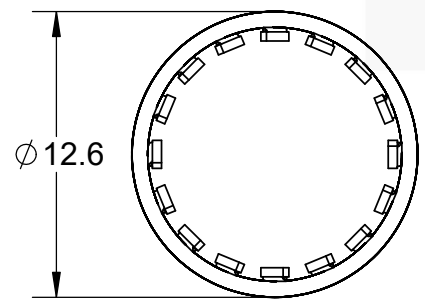
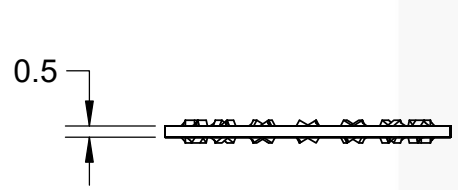


ITEM:	MATERIAL:	FINISH:	NOTES:
CONNECTOR BODY	BRASS, NOTE 1	NICKEL, NOTE 9	1. PER QQ-B-626 2. PER QQ-S-764 3. PER QQ-C-530 4. PER QQ-B-750 5. PER MIL-P-19468 6. PER ZZ-R-765 7. PER WW-T-799 8. GOLD PLATED 5µin MIN. OVER NICKEL PLATE 50µin MIN. OVER COPPER STRIKE. 9. NICKEL PLATE 100µin MIN. OVER COPPER STRIKE. 10. PER ASTM-A967 11. GOLD PLATE 30µin MIN. OVER NICKEL PLATE 50µin MIN. OVER COPPER STRIKE. 12. TIN ZINC PLATE 100µin MIN. OVER COPPER STRIKE.
CENTER CONTACT	P. BRONZE	GOLD, NOTE 8	
INSULATION	TEFLON, NOTE 4	-----	
FERRULE	BRASS, NOTE 1	NICKEL, NOTE 9	
GASKET	SILCONE, BLACK	-----	
HEX NUT	STEEL	NICKEL, NOTE 9	
LOCK WASHER	STEEL	NICKEL, NOTE 9	
CENTER PIN	BRASS	GOLD, NOTE 8	

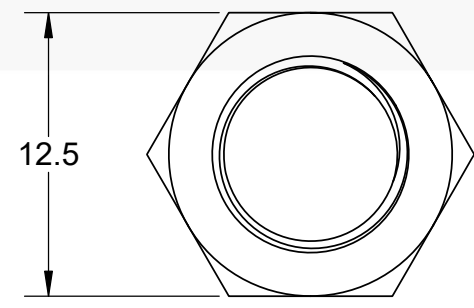
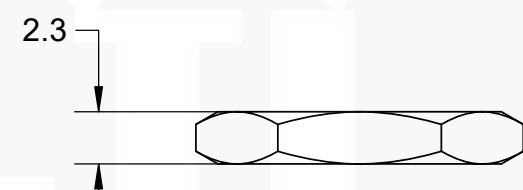
REVISIONS				
REV	ECR	DESCRIPTION	DRAWN	DATE
1		ENGRG RELEASE	P.BURDGE	05/10/2013
2		INCREASED FLANGE DIAMETER	M. LARSEN	01/10/2024



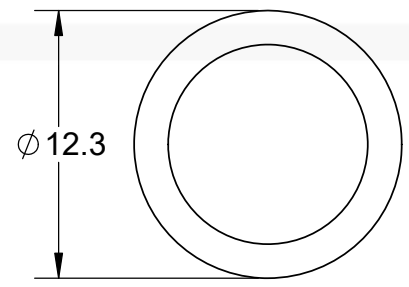
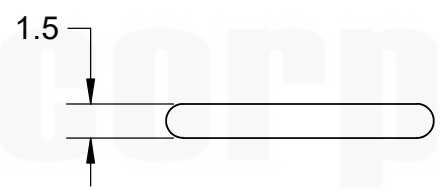
SCALE 3:1



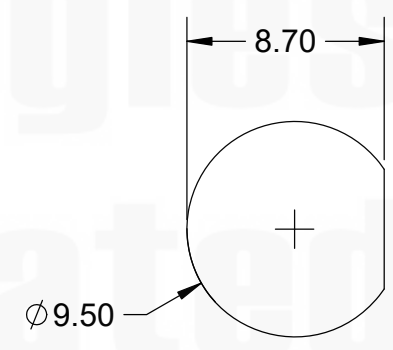
WASHER, INT TOOTH



HEX NUT



O-RING



MOUNTING HOLE RECOMMENDATION

DO NOT SCALE DRAWING		Lighthouse Technologies San Diego, CA WWW.RFCONNECTOR.COM	
TOLERANCES UNLESS OTHERWISE SPECIFIED		TITLE: TNC, JACK, FRONT MNT BLKHD, O-RING, IP-68, TEFLON, NICKEL, CRIMP RG-316	
DIMENSIONS ARE IN MILLIMETERS X = ±0.5 X.X = ±0.25 X.XX = ±0.13 ANGLE = ±30°		SIZE: B PART/DWG. NO.: TSF13FNT-316 REV: 2	
CUSTOMER APPROVAL SIGN / DATE: _____ ENG APPR. _____ CHECKED _____ DRAWN: P. BURDGE 3-30-2021 NAME DATE		SCALE: 3:1 FILE NAME SHEET 1 OF 1	

PROPRIETARY AND CONFIDENTIAL
 UNLESS OTHERWISE SPECIFIED: THIS DOCUMENT CONTAINS LIGHTHORSE TECHNOLOGIES INFORMATION. REPRODUCTION, USE, DISCLOSURE OR TRANSMITTAL OF ALL OR ANY PART OF THIS DOCUMENT IS PROHIBITED EXCEPT TO THE EXTENT APPROVED IN WRITING BY AN AUTHORIZED REPRESENTATIVE OF LIGHTHORSE TECHNOLOGIES. LIGHTHORSE TECHNOLOGIES RESERVES ALL RIGHTS UNDER PATENTS, TRADEMARKS, COPY RIGHTS AND TRADE SECRETS. COPY RIGHTS OF LIGHTHORSE TECHNOLOGIES 2011, ALL RIGHTS RESERVED.

